

JUPITER

APPENDIABITI | WALL CLOTHES-STAND

Design C. Ballabio

2020



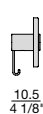
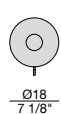
Appendiabiti da parete con struttura in massello di noce canaletta. Disco in vetro fuso (spessore 15 mm circa) con piastra e gancio in metallo finitura ottone spazzolato o cromo nero.

Wall clothes-stand with frame in solid canaletta walnut and cast glass disc (thickness 15 mm). Plate and hook in brushed brass or black chromed metal finishes.

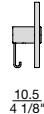
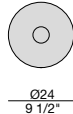
Kleiderhaken aus massivem Nussbaum canaletta und einer runden Platte aus Glassguss (Stärke 15mm). Kleiderhaken und vordere Abdeckplatte lieferbar in gebürstetem Messing, oder schwarz verchromten Metall.

Porte-manteaux mural avec structure en noyer canaletta massif. Disque en verre fondu (épaisseur 15 mm). Élément central et crochet en métal en finition laiton brossé ou chromé noir.

Perchero de pared con estructura de nogal canaletta maciza. Disco de vidrio fundido (espesor 15 mm). Placa y gancho colgador en metal acabado latón cepillado o cromo negro.



JUPITER 18



JUPITER 24

JUPITER

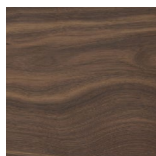
APPENDIABITI | WALL CLOTHES-STAND

Design C. Ballabio

2020



Essenze | Wood



NOCE CANALETTA
Canaletta Walnut

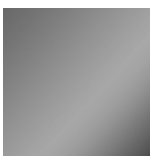


NOCE CANALETTA
Canaletta Walnut
tinto/stained wengé

Metallo | Metal

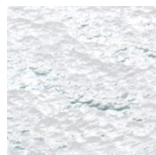


OTTONE SPAZZOLATO
Brushed brass

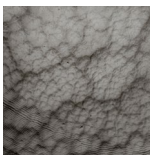


CROMO NERO
Black Chromed

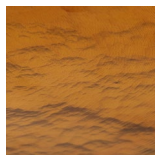
Cristallo (vetro fuso) | Cast Glass



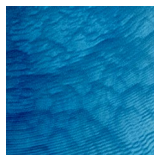
NATURALE
Clear



FUMÉ
Smoked



RUGGINE
Ruggine



BLU
Blue